



**ALLPartitions**

**& P A R T S** ©



P: 866-255-8645

F: 866-255-8640

E: [help@allpartitions.com](mailto:help@allpartitions.com)

## Phenolic - Black Core

**1.01 Work Included-** The toilet partitions shall be phenolic material with floor-to-ceiling mounting style as manufactured by Accurate Partitions Corp., Lyons, Illinois.

Furnish all labor and materials necessary for completion of work in this section as shown in the approved drawings and specified herein.

**1.02 Related Work** – Specified elsewhere shall include accessories and anchorage/blocking for attachment of partitions.

**2.01 Doors and Pilasters** – Shall be 3/4" thick solid phenolic core and decorative surface sheet on both faces.

**2.02 Panels and Urinal Screens** – Shall be 1/2" thick solid phenolic core and decorative surface sheet on both faces.

**2.03 Material** – Doors, panels, pilasters and urinal screens shall be fabricated from phenolic material comprised of multiple layers of melamine resin impregnated kraft paper, and a decorative surface sheet on both faces. All layers shall be fused together under high temperature and pressure.

**2.04 Finish** – All components shall be water-resistant. Rough edges shall be machine sanded with a 45 degree radius edge and black finish.

**2.05 Color** - Shall be selected from Accurate's full range of standard designer colors.

**2.06 Door Hardware** – Shall be Accurate gravity cam-action hinge that permits door to return to a preset position when not locked. Hinge, strike and keeper shall be brushed aluminum to resist corrosion and through bolted with tamper resistant barrel nuts and shoulder screws. Cam-action hinge shall allow emergency access by lifting the door from the bottom.

**2.07 Mounting Hardware** –Stainless steel stirrup brackets with brushed finish shall be secured to walls and pilasters with stainless steel tamper proof fasteners. Panels shall be through bolted with tamper resistant barrel nuts and shoulder screws.

**2.08 Construction Design** – Partitions shall be anchored to the floor and overhead structural member. The pilaster shall be secured to the floor with a 1/4" x 1" stainless steel mounting bar and overhead structural member with a 3/8" x 1" steel mounting bar. Each mounting bar shall be anchored to the building structure with 3/8" cadmium-plated studs. The mounting system at the top and bottom of the

**3.01 Installation** – Shall be installed in accordance to the Accurate installation instructions with partitions rigid, straight and plumb. Doors and panels shall be mounted 12" above the finished floor.

**3.02 Warranty** – Accurate Partitions Corp. guarantees its phenolic partitions, properly maintained, against delamination, breakage or corrosion for 10 YEARS from the date of receipt by the customer. If material is found defective during that period, the material shall be replaced free of charge. No credits or allowances shall be issued for any labor or expenses relating to the replacement of components covered under the warranty plan.

# Phenolic - Black Core

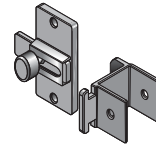


**FAST TRACK: 10 WORKING DAYS.**  
Compartment limits apply.  
Any standard color - in all four styles.

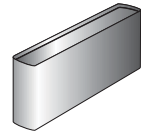
ACCURATE phenolic partitions are the material of choice where durability and strength are required. These partitions are fabricated to stand the test of time. The dense components, combined with stainless steel brackets and fasteners, stand up to the most extreme conditions of moisture and humidity. Phenolic is impact, water, and corrosion resistant, and does not support bacteria.

The phenolic partition is decoratively faced on both sides as an integral part of a resin-impregnated kraft paper core. The surface sheets are fused at high temperature and pressure. In addition to strength and serviceability, a wide range of colors provides limitless design flexibility. ACCURATE phenolic partitions are available in all four design styles.

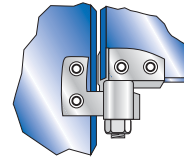
## CONSTRUCTION FEATURES



**EMERGENCY ACCESS**  
Meets ADA requirements. Slotted keeper coupled with gravity hinges allow emergency access with a simple lift and pull.



**SHOE CONSTRUCTION**  
Stainless steel, double-hemmed, trim shoe with #4 satin finish conceals mounting fasteners and hardware.



**VAULT-TYPE HINGE**  
Rugged, attractive wrap-around hinge. Extra strong for heavy-duty installations.



**VANDAL-RESISTANT FASTENERS**  
Special driver installs fasteners, virtually eliminating unauthorized removal, and ensuring easy installation. Stainless steel fasteners are standard for phenolic partitions.

## COLOR SELECTION



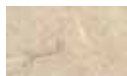
3010  
Dove Gray



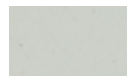
4000  
Almond



1130  
Neutral Glace



4410  
Natural Canvas



3000  
Silver Gray



3300  
Folkstone Celesta



6035  
Hunter Nebula



3320  
Graphite Grafix



5000  
Burgundy



3330  
Ebony Granite

Actual Colors will vary from those shown do to limitations in printing process. Please make final color selection from available color samples.

## Options:

Class "A" Fire Rated Material  
Full Height Piano Hinges  
Full Height Stainless Steel Brackets